



Edenhope Streetscape - Precedent Images
West Wimmera Shire Council



Australian Government

BUILDING OUR FUTURE



THOMSON HAY
LANDSCAPE ARCHITECTS

130 Howards Road, WATTLE FLAT VIC 3352
T 03 5334 5321
E office@thomsonhay.com
W www.thomsonhay.com

Project:
Edenhope Central Activities
Area Streetscape

Prepared for:
Wimmera Mallee Tourism &
West Wimmera Shire Council

Precedents

Date: 18.11.2021

Feature Trees



Eucalyptus scoparia - Wallangarra White Gum
Smooth white trunk and rounded, weeping canopy.
Small white flowers & gum nuts.



Eucalyptus leucoxylon 'Rosea'- Red Flowering Yellow Gum
Smooth trunk with cream and grey coloured bark.
Prolific red flowers in Spring, bird attracting, medium-sized gum nuts.



Brachychiton populneus - Kurrajong
Dense canopy of glossy green foliage.
Drought tolerant, suitable for pruning under powerlines.

Existing Trees



Pyrus sp. - Ornamental Pear
Provides year-round seasonal features.



Plan for future Elm tree replacement, car parking and drainage re-configuration along Anzac Avenue.

Bladed Plants



Dianella 'Breeze' - Dianella cvt.



Dianella 'Tasmanica Blaze' - Dianella cvt.



Dianella 'Little Jess' - Dianella cvt.



Lomandra 'Evergreen Baby' - Lomandra cvt.

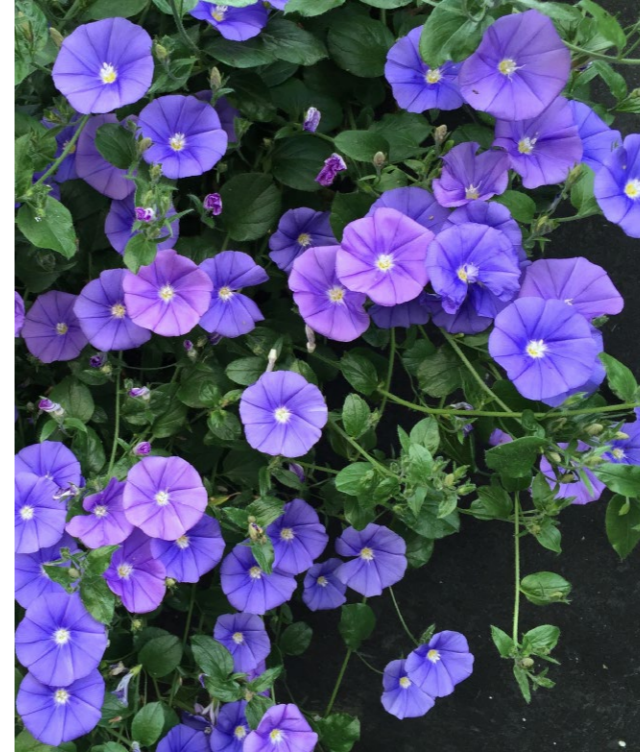


Agapanthus 'Blue Diamond' - Dwarf Agapanthus

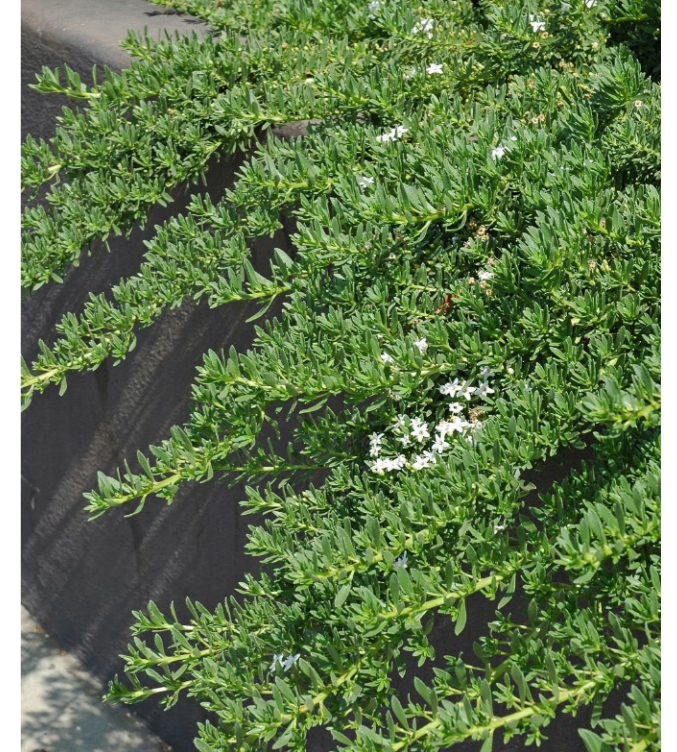


Lomandra 'Tanika' - Lomandra cvt.

Groundcovers



Convolvulus sabatius - Blue Rock Bindweed



Myoporum parvifolium - Creeping Boobialla

Outdoor Furniture



Existing bench seats and bollards to be relocated (where required) and refurbished including repainting in new colour (i.e. colourbond 'Ocean Blue') and replacement of timber slats



Existing lights - repaint in new colour to compliment Edenhope's marketing / branding strategy (ie. Colorbond 'Ocean Blue')



Existing picnic table (detail) - repaint, replace battens and re-use throughout streetscape



Electric vehicle charging station (example).



Proposed drinking fountain including dog bowl (example).



Proposed bin with custom laser cut panel to be designed to enhance the marketing / branding of Edenhope (example).



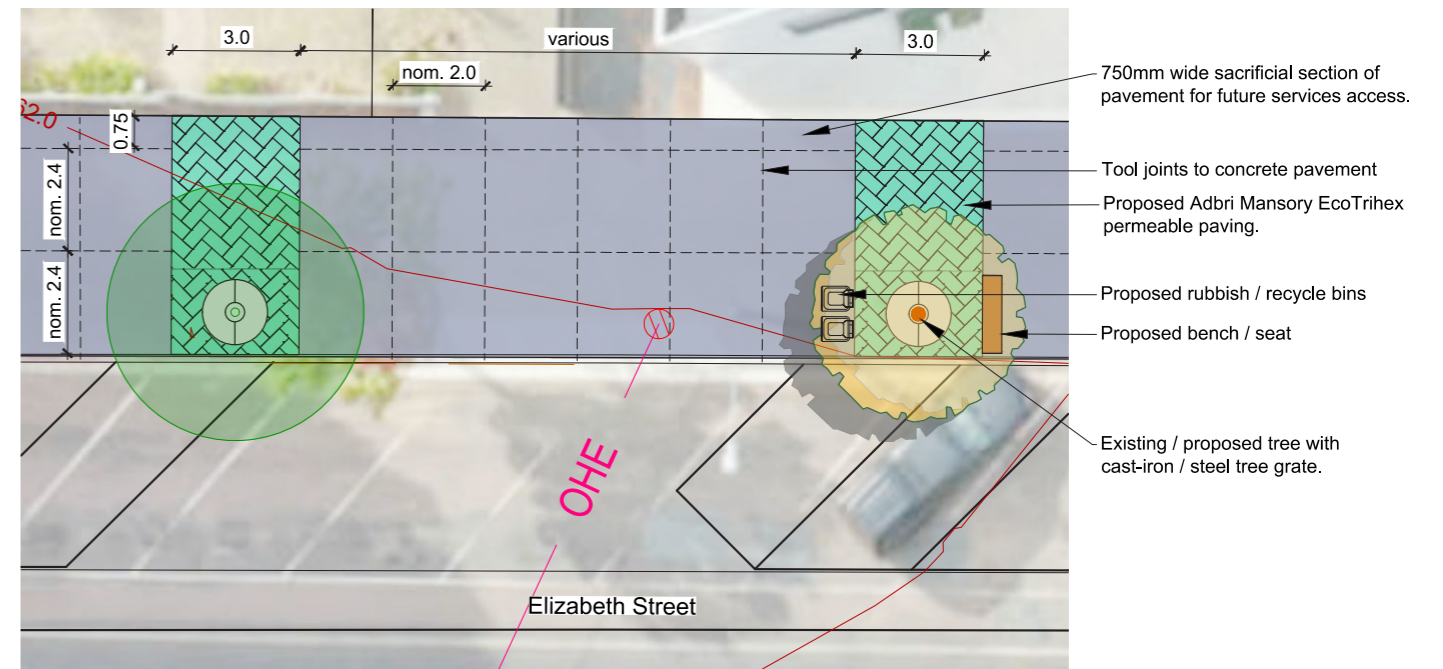
Streetscape Treatments



Permeable paving to surround existing / proposed street trees with cast iron / steel tree grate.



Exposed aggregate concrete paving
 Exposed aggregate mix : 50% bluestone; 50% 10mm Mount View quarries white pebble.
Concrete available from: Vickery Bros. Pty Ltd
 Contact: 03 5575 2777
Pebbles available from: Horsham Concrete
 Contact: 03 5381 0831



Typical Concrete Pavement Detail
 Not to Scale



Standard concrete paving with tool joints in a grid pattern



Parklet area with street furniture (examples)



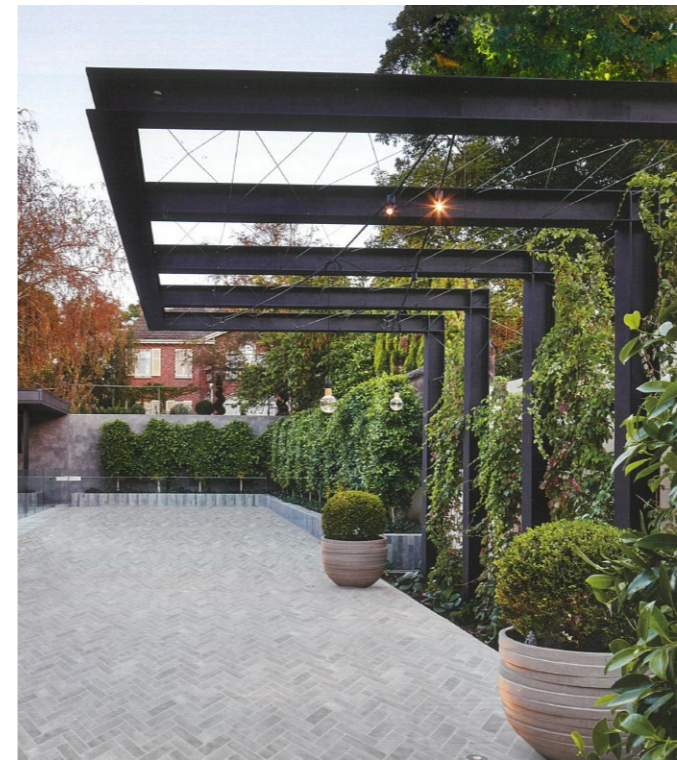
SVC custom concrete block bench (example)
 Size: 500mm H x 500mm W
 Available from: SVC
 Contact: 1300 287 782
 Web: sales@svc.com.au

Shelters



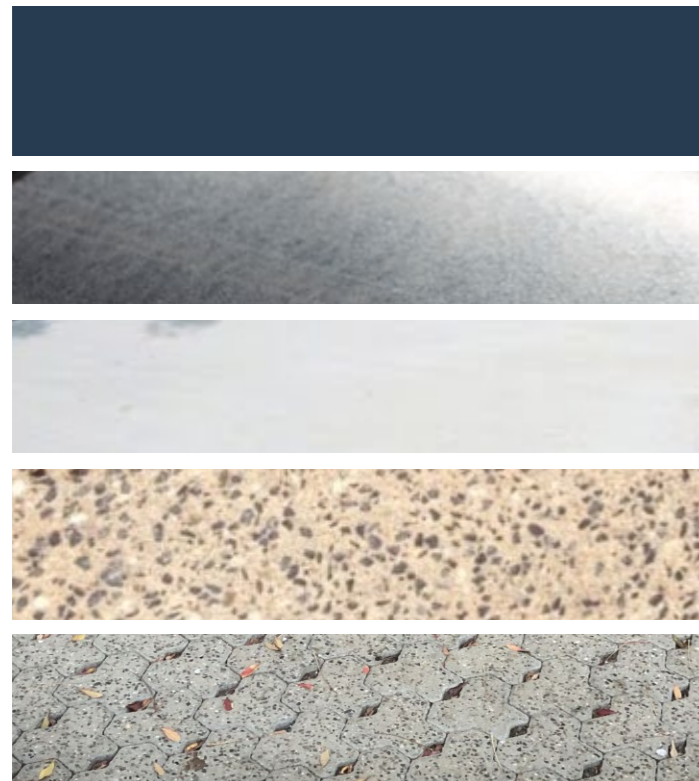
Renovate (replace roof sheeting) and re-paint existing shelter in new colour

Arbour Examples



Steel framed arbour with climbing vine

Streetscape Colour Palette



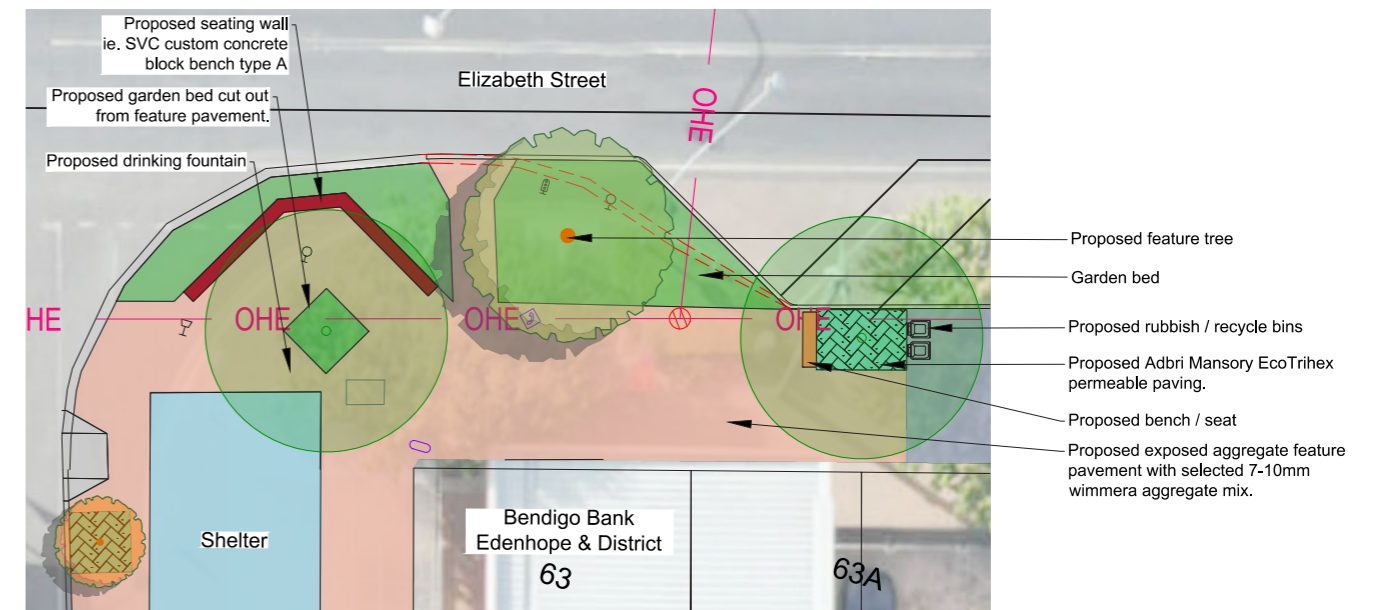
- Colorbond 'Ocean Blue' (proposed furniture colour)

- Stainless Steel

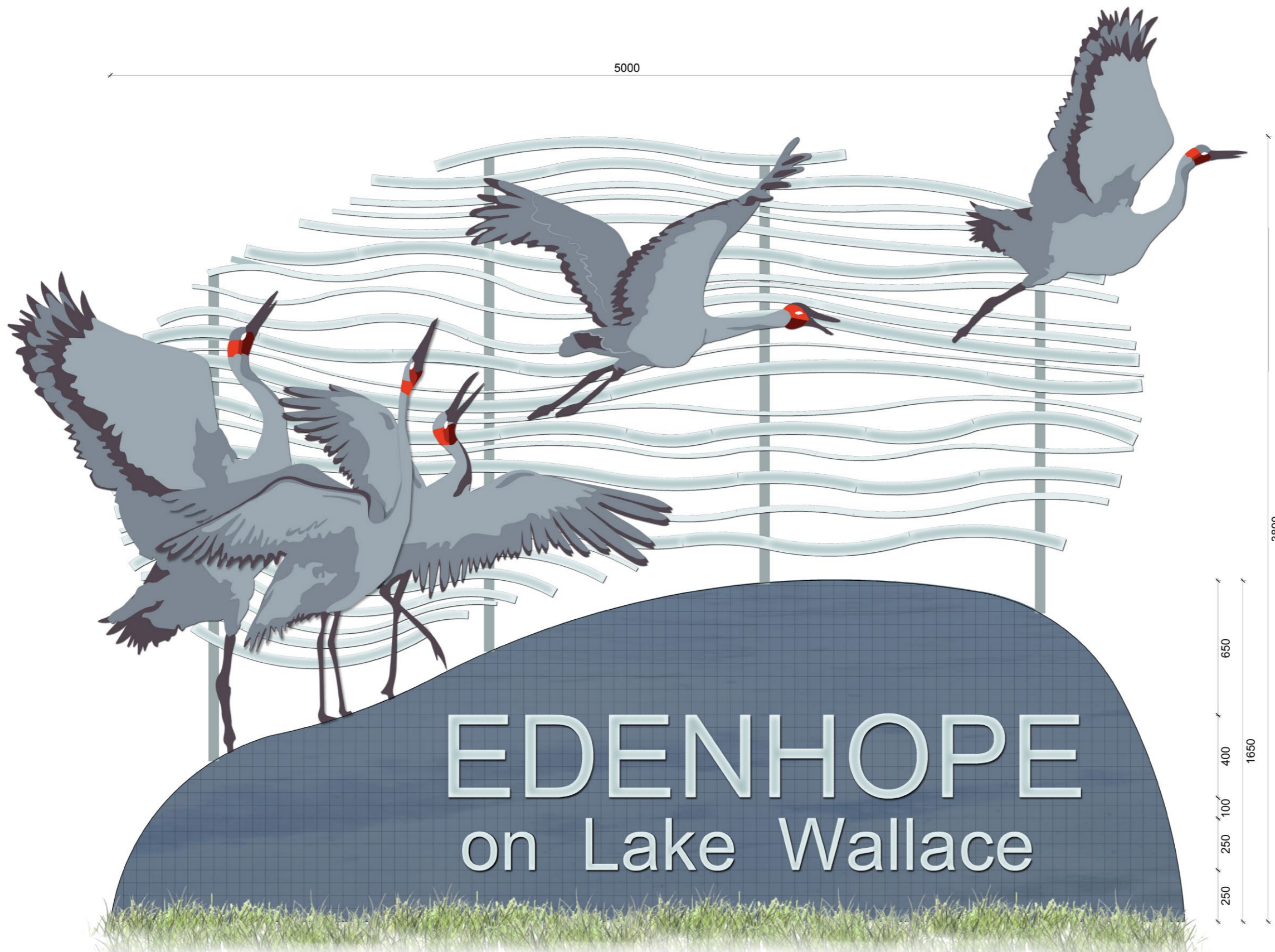
- Standard grey concrete with a light broom finish

- Exposed aggregate feature Pavement with selected 7-10mm wimmera aggregate mix.

- Permeable paving (ie. Adbri Masonry - EcoTrihex) - colour and texture to future detail.



Typical Detail of a Parklet
Not to Scale



EDENHOPE TOWNSHIP ENTRY SIGN

Materials & Colours:

- In situ concrete wall with blue / grey / white mosaic tiles to be representative of colour and the reflections on lake.
- Wavy stainless steel strips - varying width, representative of ripples on water.
- Life size laser cut stainless steel brogals with high quality paint finish.
- Stainless steel or painted PVC lettering.

ENTRY SIGN CONCEPT ELEVATION
Scale 1:10 @ A1